

panoRama One7525

1 YEAR OUTSIDE MOUNT, SELF ADHESIVE PERFORATED ONE WAY VISION FILM

panoRama ONE7525

Our Standard 1 Year Outside Mount, Self Adhesive Perforated One Way Vision Film. Manufactured using high-quality vinyl with clear solvent acrylic adhesive and a universal paper liner. It is perfect for those who would like to unite quality and ultra competitiveness.

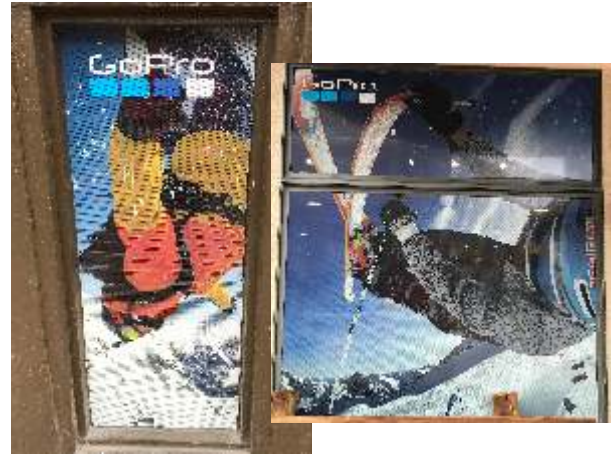
Available only with a 75/25 hole pattern.
One7525 - 75/25 film

APPLICATIONS

- Shop windows.
- Building wraps.
- Event Graphics.
- Sales Promotions.
- All applications up to 12 months.

ADVANTAGES

- Printable digitally with solvent, eco-solvent, latex & UV inks and screen print inks.
- 12 month durability warranty if applied under normal conditions.
- Clean removal up to 1 year under normal conditions (6 months without residue).
- Calendered vinyl features great dimensional stability.
- The universal paper liner finish enables easy handling when applying on the window.
- Semi-permanent, clear solvent acrylic adhesive offers easy removal.



www.cgxusa.com
info@continentalgrafix.com

Rev042018

CONTINENTAL
GRAFIX

panoRama One7525

1 YEAR OUTSIDE MOUNT, SELF ADHESIVE PERFORATED ONE WAY VISION FILM

MATERIAL

- Perforated High-Quality Vinyl (145 microns) 6 mil Thickness.
- Printable White Front Side.
- Black Reverse Side for Maximum Contrast.
- Removable, Semi-Permanent Clear Solvent Acrylic Adhesive.
- Universal Paper Liner - 4 mil.

OPEN AREA / PRINTABLE AREA

- Open Area: 25%.
- Printable Area: 75%.

PRINTING METHODS

- Digital - Solvent, Eco-Solvent, Latex & UV
- Screen Printing

FLAMMABILITY

- ASTM E84 Certified, M1 & B1

HUMIDITY & SOLVENT RESISTANCE

- Good

APPLICATION & REMOVAL TEMPERATURES

- +50°F to +86°F (+10°C to +30°C)

SERVICE RANGE TEMPERATURES

- +0°F to +122°F (-17°C to +50°C)

SHELF LIFE

- 12 Months Stored At +59°F to +68°F (+15°C to +20°C), Relative Humidity Between 45% and 65%.

DURABILITY

- Up to 1 year in normal conditions. Clean removal within 6 months. Tack may increase over time.

APPLICATION

- Prevent from contact with solvent or ammonia based cleaners. Clean window with soap and water, rinse and dry glass or surface after cleaning. ALWAYS clean and dry glass or surface prior to application. Please respect our application instructions. For proper installation & removal, please refer to our *"panoRama Self-Adhesive Application & Removal Guide"*.

IMPORTANT INFORMATION

Continental Grafix products are warranted to be free of defects in material and manufacture at the time of shipment and to meet the specifications stated on this Technical Specification sheet. Continental Grafix will replace or refund the price of any Continental Grafix materials found not to meet our product specifications. In no case shall Continental Grafix be liable for any direct, indirect, or consequential damages, including labor or Non-Continental Grafix material charges.

**The determination of suitability of this product for any specific use is solely the responsibility of the user. No representations, guarantees or warranties of any kind are made to the accuracy of suitability for specific applications.

Note: For critical substrates and all surfaces, please test in an inconspicuous location prior to final application.

www.cgxusa.com
info@continentalgrafix.com

Rev042018

CONTINENTAL
GRAFIX